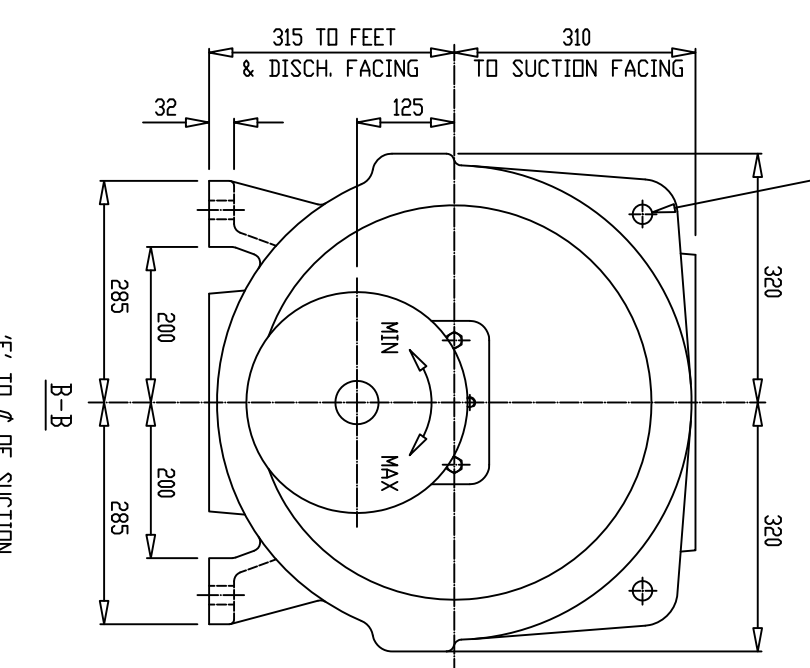
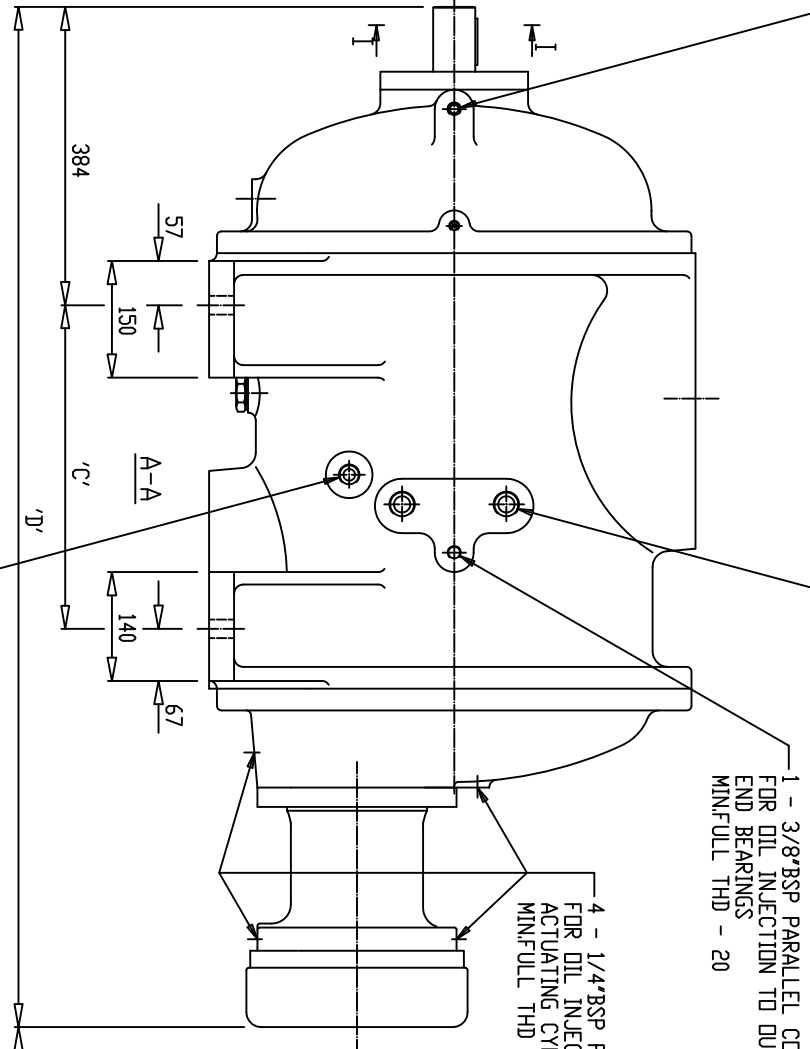


- NOTE
1. ROTATION OF INPUT SHAFT IS CLOCKWISE WHEN LOADING ON INPUT SHAFT.
 2. SUCTION/DISCHARGE/SUPERFEED FACINGS ARE TO BS1560CLASS 300/ANSI B16.5CLASS 300
 3. ALL SERVICE CONNECTIONS ARE THREADED BSP PARALLEL TO BS2779 AND ISO228/1-SERIES 'G'



2+2 HOLES - Ø25 FOR LIFTING PURPOSES

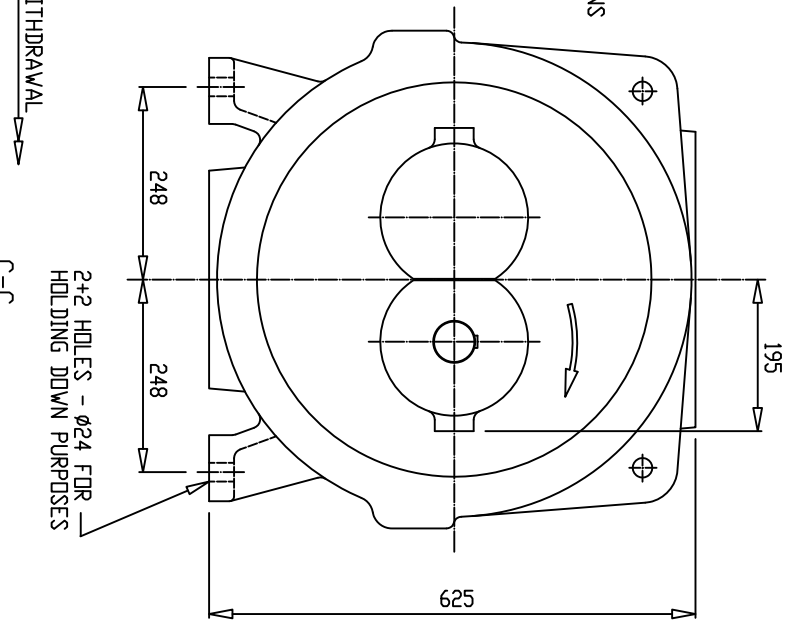


1 - 3/8" BSP PARALLEL CONNECTION FOR OIL INJECTION TO INLET END BEARINGS, SEAL ETC MINIFULL THD - 20

1+1 - 1" BSP PARALLEL CONNECTION FOR LIQUID REFRIGERANT INJECTION MINIFULL THD - 25

1 - 3/8" BSP PARALLEL CONN. FOR OIL INJECTION TO OUTLET END BEARINGS MINIFULL THD - 20

4 - 1/4" BSP PARALLEL CONNECTIONS FOR OIL INJECTION TO HYDRAULIC ACTUATING CYLINDER MINIFULL THD - 15



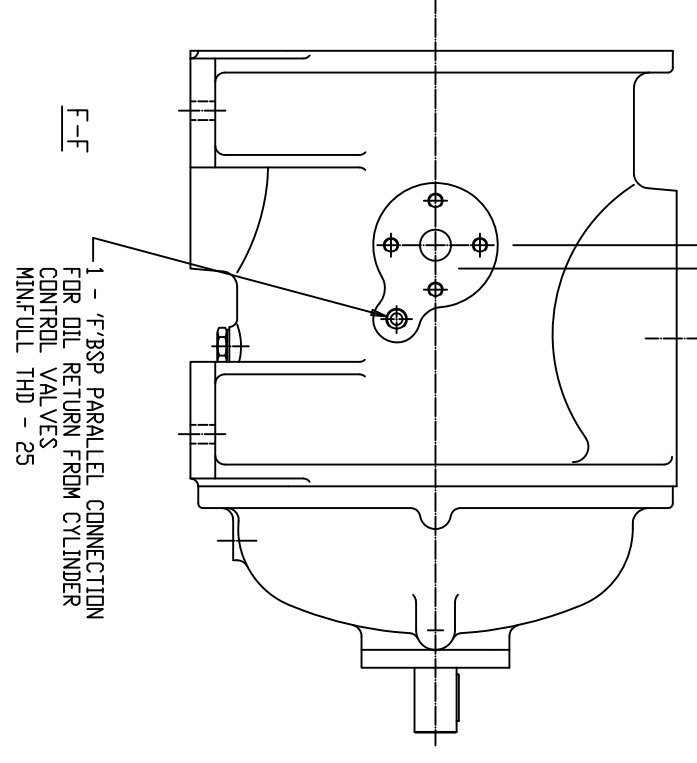
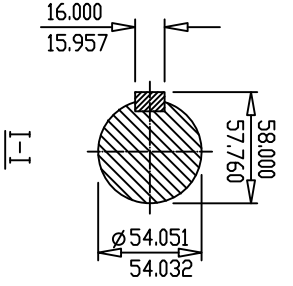
2+2 HOLES - Ø24 FOR HOLDING DOWN PURPOSES

1 - 3/4" BSP PARALLEL CONNECTION FOR OIL INJECTION MINIFULL THD - 25

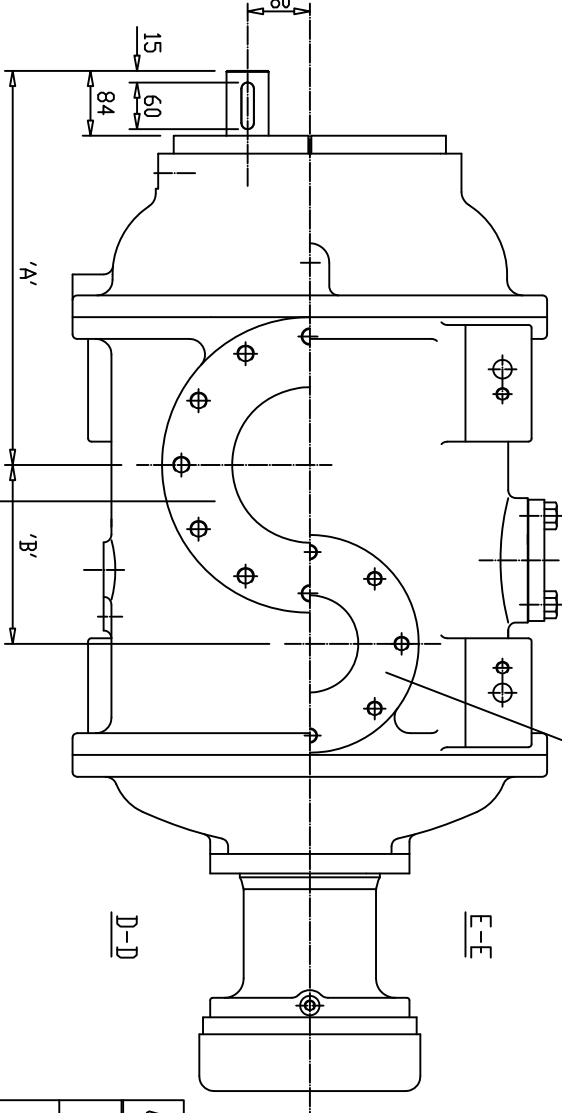
DISCHARGE FOR OIL INJECTION [SEE NOTE 2]

8 HOLES - 3/4" -10UNC-2B-EQUI-SPACED **/CRS DN 235 PCD. MINIFULL THD - 21 [SEE TABLE]

8 HOLES - 3/4" -10UNC-2B-EQUI-SPACED DN CRS DN 200 PCD. MINIFULL THD - 21



1 - 1" BSP PARALLEL CONNECTION FOR OIL RETURN FROM CYLINDER CONTROL VALVES MINIFULL THD - 25



8" 12 HOLES - 7/8" -9UNC-2B-EQUI-SPACED DN CRS DN 330/200 PCD. MINIFULL THD - 30

6" 12 HOLES - 3/4" -10UNC-2B-EQUI-SPACED DN CRS DN 269/900 PCD. MINIFULL THD - 25

COMRESSOR	DIMN A	DIMN B	DIMN C	DIMN D	DIMN E	DIMN F	DIMN G	SUCTION BORE	DISCH BORE	CMPR WEIGHT(g)
WRV/204110	504	119	303	1201	13	1/2"	195	DN150	DN100	790
WRV/204145	507	188	375	1273	80	1/2"	300	DN200	DN125	885
WRV/204165	504	230	416	1314	123	3/4"	300	DN200	DN125	905
WRV/204193	507	285	470	1370	175	3/4"	345	DN200	DN125	940

NOTE:- * = DN CENTRES FOR L/D=1.45 AND 1.93
** = DTF CENTRES FOR L/D=1.65

MOD.	ZONE	MODIFICATION	SIGN.	DATE	MOD.	ZONE	MODIFICATION	SIGN.	DATE	MOD.	ZONE	MODIFICATION	SIGN.	DATE	MOD.	ZONE	MODIFICATION	SIGN.	DATE
9					6					3					994148		MODEL USAGE UPDATED		
8					5					2					972722		DRILLING DETAILS AMENDED FOR S' DISCHARGE FACING		
7					4					1					964026		DRILLING DETAILS AMENDED FOR DISCHARGE FACING		

UNLIMITED MACHINED SIZES TO BE WITHIN

THIS DRAWING IS CONFIDENTIAL AND IS THE PROPERTY OF HOWDEN COMPRESSORS LTD. IT IS TO BE KEPT IN STRICTLY CONFIDENTIAL AND IS NOT TO BE REPRODUCED OR COPIED IN ANY MANNER WITHOUT THE EXPRESS WRITTEN PERMISSION OF THE COMPANY.

WRV204/RANGE COMPRESSOR EXTERNAL ARRANGEMENT

SCALE:-

DRAWING No. R20737

HOWDEN COMPRESSORS LIMITED, GLASGOW, UK.