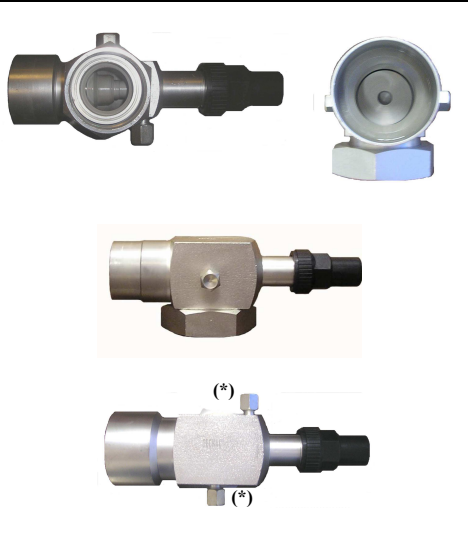


## ROTALOCK VALVES VÁLVULAS ROTALOCK.

CODE / CÓDIGO	MODEL / MODELO
A-005038	1" x 3/8" SAE
A-005003-01	1" X 1/2"ODS
A-005003-02	1" X 5/8"ODS
A-005024	1 1/4" X 5/8"ODS
A-005001-01	1 1/4" X 3/4"ODS
A-005001-02	1 1/4" X 7/8"ODS
A-005025	1 1/4" X 1 1/8"ODS
A-005002-01	1 3/4" X 1 1/8"ODS
A-005002-02	1 3/4" X 1 3/8"ODS
A-005004-02	2 1/4" X 1 5/8"ODS
A-005004-01	2 1/4" X 2 1/8"ODS



Weld type steel Valves with coating anticorrosion.

Sealed plastic plug of great capacity to avoid losses of refrigerant.

All the valves include two gauges of 1/4" SAE (\*) with brass plugs.

Category I according with PED 97/23/CE.  
Compatible only with fluids of the group II.

Other measures on demand. Please consult

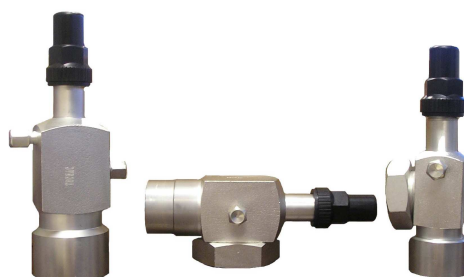
Válvulas tipo soldar de acero con revestimiento anticorrosión.

Tapón de sellado de plástico de gran capacidad para evitar pérdidas de refrigerante.

Todas la válvulas incluyen dos tomas de 1/4" SAE (\*) con tapón de latón.

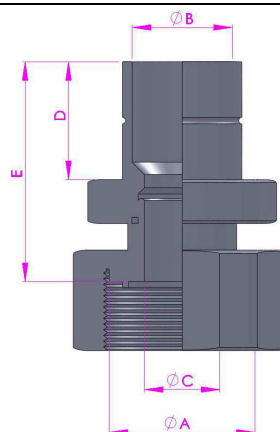
Son de Categoría I conforme a PED 97/23/CE.  
Compatible únicamente con fluidos del grupo II.

Otras medidas consultar



## ROTALOCK STRAIGHT ADAPTERS ADAPTADORES ROTALOCK RECTAS.

MODEL MODELO	CODE CÓDIGO	Ø A (ROTALOCK)	Ø B (ODS)	ØC mm	D mm	E mm
A-1x5/8	A-004105	1" – 14UNS	5/8"	12	16	35
A-11/4x5/8	A-004106	1 1/4" – 14UNF	5/8"	18	16	37.7
A-11/4x3/4	A-004107	1 1/4" – 14UNF	3/4"	18	16	37.7
A-11/4x7/8	A-004108	1 1/4" – 14UNF	7/8"	18	20	43.7
A-11/4x11/8	A-004109	1 1/4" – 14UNF	1 1/8"	18	20	50.7
A-13/4x11/8	A-004110	1 3/4" – 14UNF	1 1/8"	28	20	55.2
A-13/4x13/8	A-004111	1 3/4" – 14UNF	1 3/8"	28	20	55.2
A-13/4x13/8	A-004112	1 3/4" – 14UNF	1 5/8"	28	20	57.7



Consult rotalock plugs / Consultar tapones rotalock

